



BuT benefits are available for young people with little money.

BuT stands for Education and Participation.

Participation means:

Being there, taking part.

BuT helps reduce the costs of many things. For example:

- Excursions and trips with schools and kindergartens
- Midday meals in schools and kindergartens
- School materials
- Private lessons
- Membership fees for clubs
- Swimming lessons
- Music lessons
- Holiday recreational activities
- ... and much, much more.

Contacts for more information:

Telephone: 05 11 – 61 62 63 64

E-Mail: BuT@region-hannover.de

Internet: www.hannover.de/BuT



Region Hannover



If you still have open questions:

For detailed information about the subsidies available for education and participation and to download application forms, please visit the website www.hannover.de/BuT.

Information and individual advice is also available by phone or e-mail from the BuT (education and participation benefits) team of Region Hannover:

Telephone: (0511) 61 62 63 64

E-Mail: BuT@region-hannover.de

Region Hannover

Fachbereich Soziales

Team Bildungs- und Teilhabeleistungen –50.11–

Hildesheimer Straße 20

30169 Hannover

Pictures:

Cover: © Sergey Novikov – Fotolia.com

Inside: © yanlev – Fotolia.com,

© drubig-photo – Fotolia.com, © Kzenon – Fotolia.com,

© Gennadiy Poznyakov – Fotolia.com,

© grafikplusfoto – Fotolia.com

Layout:

Region Hannover, Team Medienservice

Print:

Region Hannover, Team Medienservice

Printed on 100 % recycled paper



Sprache: Englisch

HANNOVER



EDUCATION AND PARTICIPATION
in kindergartens, schools and recreation

Subsidies for children and young people under the age of 25



Region Hannover

What are subsidies for education and participation?

Education and participation in community life are key factors in creating equality of opportunity. The subsidies for education and participation help support young people from low income families so that they can take equal part in the offers provided by schools, kindergartens and in recreation activities. Subsidies are possible in the following areas:

▪ EXCURSIONS AND TRIPS ORGANISED BY SCHOOLS, KINDERGARTENS AND DAY CARE CENTRES

The costs for group excursions and trips over several days are fully subsidised, with the exception of pocket money.

▪ MIDDAY MEALS AT SCHOOLS, KINDERGARTENS AND DAY CARE CENTRES

Communal midday meals are partly subsidised.

▪ SCHOOL SUPPLIES

Costs incurred due to school attendance are subsidised with lump sums: in August of € 70.00 and in February of € 30.00.

▪ STUDENT TRANSPORTATION

If the walking distance between home and school is more than two kilometres and travel expenses are not covered by other parties, subsidies are available for student transportation.

▪ LEARNING SUPPORT

Any school children at risk of not achieving key learning targets can have the costs of private lessons subsidised.



▪ BENEFITS FOR PARTICIPATING IN SOCIAL AND CULTURAL COMMUNITY LIFE

Activities can be subsidised which help promote the recreational activities of children and young people in the community - membership of clubs, swimming lessons, leisure time activities, music lessons and more. 10 euros are available per person per month: this may also be divided between a number of offers or saved for a single larger activity.

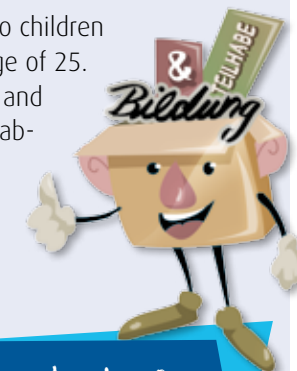
Who receives subsidies?

Entitled persons are young people if they or their families are recipients of the following benefits:

- Unemployment benefits II (SGB II) (SGB - Social insurance code)
- Social assistance (SGB XII)
- Housing allowance and child allowance (§ 6b BKGG - Federal law on family allowances)
- Asylum seekers benefits (§§ 2 or 3 AsylBLG - Asylum seekers benefits law)

Persons who do not receive the above benefits but who cannot afford the costs for education and participation have the option of individual assessment to receive education and participation subsidies.

Entitlement to benefits applies to children and young persons under the age of 25. Subsidies to participate in social and cultural community life are available until attaining the age of 18.



How can I receive the subsidies?

The subsidies for education and participation must be applied for. Application can be either informal or using the form available from the Region Hannover and the social welfare offices of the towns and municipalities or at the following website: www.hannover.de/BuT. For more information about the various options for application, please refer to the website.

